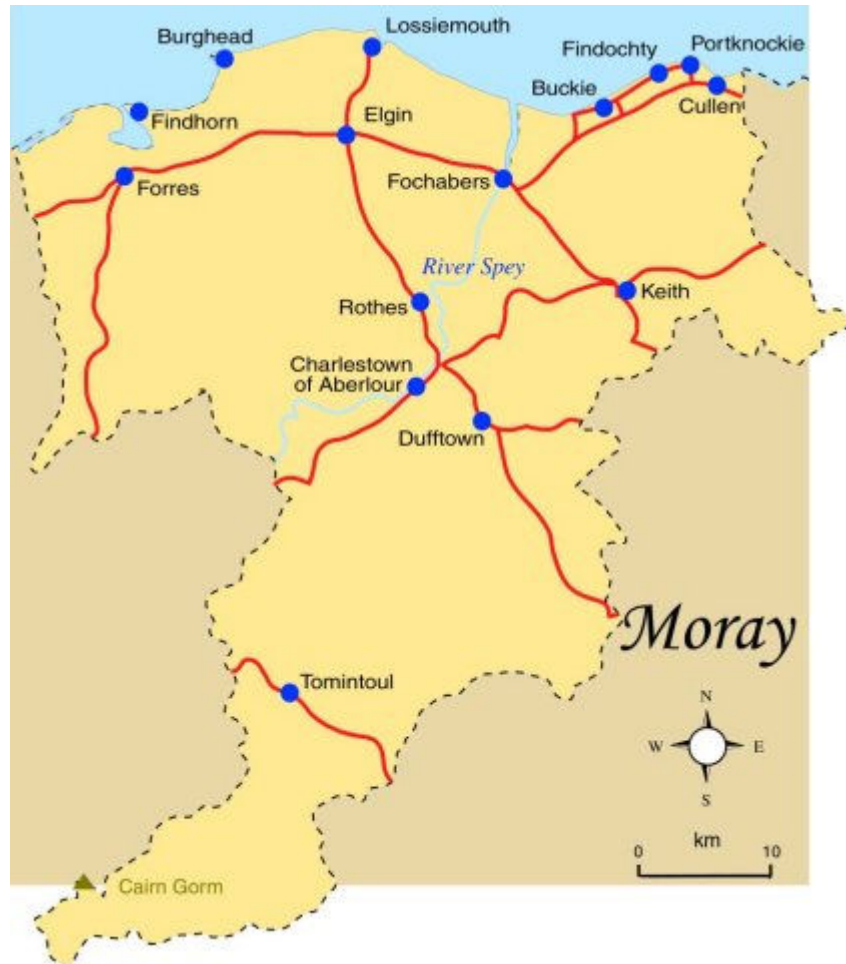


MORAY 'SMARTER' THEME



© The Gazetteer for Scotland, 1995-2007
Used with permission from The Gazetteer for Scotland at
<http://www.geo.ed.ac.uk/scotgaz/>

STRATEGIC ASSESSMENT

2007/08

Contents

Introduction	p.3
A Profile of Moray	p.4
Key 'Smarter' Themes	
1) We are better educated, more skilled and more successful, renowned for our research and innovation	p.9
2) Our young people are successful learners confident individuals, effective contributors and responsible citizens	p.13
3) Our children have the best start in life and are ready to succeed	p.21
4) We have improved the life chances for children, young people and families at risk	p.23
References	p.26

Introduction

This is the first strategic assessment undertaken on the 'Smarter' Community Planning Theme. It will inform a wider process designed to support strategic decision-making in relation to managing risks, setting priorities and allocating resources. The aim is to help Moray's Community Planning Partnership Theme Group to achieve not only its own outcomes and objectives but also those set by the Moray Council administration and the Scottish Government, ultimately ensuring children and young people have a right to grow up, develop to the best of their ability and have access to the services which will allow them to reach their full potential.

The information and analysis contained within this report will be most effective when combined with the knowledge and local expertise that exists within the Community Planning Partnership Theme Group and across partner agencies.

The assessment is divided into 4 main themes in order to ensure a wide range of issues are considered. The themes are:

- We are better educated, more skilled and more successful, renowned for our research and innovation
- Our young people are successful learners confident individuals, effective contributors and responsible citizens
- Our children have the best start in life and are ready to succeed
- We have improved the life chances for children, young people and families at risk

For each of the 4 themes, the current picture is described along with any emerging trends and future considerations. Recommendations are included for consideration only.

The most recent available data is used and where possible this has been sourced independently to provide an unbiased picture. For some topics, it was not possible to obtain ideal data, either because it is not collected or not available at Moray level. In these cases, data has been obtained from an appropriate source and analysed to provide an indication of the situation in Moray.

A Profile of Moray

Moray is the 8th largest Council area in Scotland, covering an area of 2238 square kilometres [1], from the Cairngorm Mountains in the south to the coast of the Moray Firth in the north. However, in terms of its population, it ranks 25th out of 32 with a population of just 86870 [1]. The area is mostly rural comprising 70% open countryside and a further 25% woodland [2]. The average population density is low at just 39 people per square kilometre, compared with 66 people per square kilometre nationally [1]. However, approximately 56% of the population live in the 5 main towns of Elgin, Forres, Buckie, Lossiemouth and Keith [3], where the population density is approximately 2500 people per square kilometre [4].

Overall, Moray is one of the least deprived areas in Scotland, as defined by the Scottish Index of Multiple Deprivation (SIMD), having no data zones in the 15% most deprived in Scotland and just 2 in the 20% most deprived areas, both of which are in Elgin. This represents just 1.7% of Moray's data zones, the lowest in Scotland with the exception of the three island groups. However, the rural nature of Moray means that 27.6% of its data zones are within the 15% most access deprived in Scotland, due to the financial cost, time and inconvenience of travelling to basic services [5].

Prosperity

Although categorised as one of the least deprived local authority areas in Scotland, the median gross weekly wage in Moray is the lowest in Scotland, at £388.40 compared with £461.80 nationally [6]. The SIMD states that 9.3% of Moray is income deprived, which accounts for 8,169 residents. However, the level of income deprivation in Moray varies greatly across the area, from 1.5% in Kinloss to 22.7% in one area of Buckie [5].

The working age population accounts for approximately 61% of the total population of Moray, with around 83% of the working-age population (around 52% of the total population) being economically active. These proportions are very similar nationally. In Moray, 81% of the working-age population is in employment, nearly 14% of whom are self-employed, compared with 76% & 10% respectively for Scotland as a whole. Almost $\frac{3}{4}$ of employee jobs are in the service industry, a further 15% are in manufacturing and 7% are in construction. Nearly 10% of employee jobs are tourism-related but this includes jobs that are also part of the service industry. Equivalent figures for Scotland show the main difference to be in the proportion of employees in manufacturing, which is nearly 6% lower nationally [6].

Of the working-age population that is economically inactive, approximately 69% report not wanting a job and over 60% of these are female. The picture is very similar nationally. During 2007/08, 3.4% (1,600) of the economically active population in Moray were unemployed, compared with 4.5% nationally. However, there were a further 2,600 people within the economically inactive (5.1% of the working age population) in Moray who wanted a job. They are not classed as unemployed because they have either not sought work in the

last four weeks or are not available to start work. The equivalent figure for Scotland is 5.5% [6].

In May 2008, 12% of the working age population in Moray were key benefits claimants (claiming one or more key DWP benefits¹), compared with 16% in Scotland. The most common main benefit in Moray was incapacity benefit, claimed by 3,400 (54%) of key benefit claimants, while 890 or 14% of key benefit claimants were claiming job seekers allowance as their main benefit. The split nationally was very similar to Moray [6].

In total there were 1,132 JSA claimants at the end of 2008, 73% of whom were male. Approximately ½ of all claimants were aged 25-49yrs and a further 28% were aged 18-24yrs. The majority of claimants, 85%, had been claiming for 6 months or less, a further 10% between 6 and 12 months, and 5% over 12 months [6].

The SIMD identifies no data zones in Moray that are in the 15% most employment deprived [5].

Health

General health in Moray is reported as being slightly better than nationally with nearly 93% of Moray's population reporting good or fairly good health and just 7% reporting not good health. This compares with 90% and 10% respectively for Scotland [7]. The percentage of the population that has a limiting long-term illness is approximately 3% lower in Moray than nationally, at 17% of the population compared with 20% [7].

The relationship between health and tenure indicates that a smaller proportion of occupants of social rented accommodation report good or fairly good health than occupants of owned or privately rented/rent free accommodation, at 88% compared with 94%. This is reflected in the incidence of limiting long-term illness, which is 10% higher for occupants of social rented accommodation, at 24%, than for occupants of owned or privately rented/rent free accommodation. The spread across age groups is comparable, with 65-84yr olds representing the largest proportion of each tenure type having a long-term illness. The national picture is similar with 82% of those in social rented accommodation reporting good or fairly good health, 93% of those in owned and 89% of those in private rented/rent free. The proportion of those living in social rented accommodation with a limiting long-term illness is twice that of those living in owned accommodation. As with Moray, spread across age groups is comparable, with 65-84yr olds again representing the largest proportion of each tenure type having a limiting long-term illness [7].

The standardised death rate in Moray is slightly lower than nationally at 10.5 per 1,000 population compared with 10.8 per 1,000 population. The main cause of death in Moray in females is diseases of the circulatory system, which accounted for approximately ⅓ of all female deaths in 2007. This was

¹ Key DWP(Department of Work & Pensions) benefits include: bereavement benefit, carer's allowance, disability living allowance, incapacity benefit, severe disablement allowance, income support, jobseeker's allowance, and widow's benefit.

closely followed by cancers, which accounted for just over ¼ of all female deaths. In males, the situation was reversed. On a national level, the picture is similar although diseases of the circulatory system are the most common cause of death for both genders, accounting for about ⅓ of deaths, closely followed by cancers [8]. The SIMD identifies just 1 data zone, 0.9% of the total in Moray that is within the 15% most health deprived; this is in Elgin [5].

Mid-2007 population estimates suggest that 18% of the population of Moray is aged under 16yrs, 61% is of working age and 21% is of pensionable age. This translates as 16074 under 16s, 52588 of working age and 18208 of pensionable age [1]. The age split is very similar nationally. 2006-based population projections for Moray, suggest that the under 16 population will reduce by 9% by 2011, the working age population will increase by 1% but the pensionable population will increase by 10% [9]. This would mean 2011 population numbers of 14627 under 16s, 53114 of working age and 20029 of pensionable age. These changes will mean that the proportion of the population that is of pensionable age will increase by around 2% from approximately 20% to nearly 23%. National figures are again very similar although the projected proportion of the population of pensionable age in 2011 is lower at 20%. Both in Moray and nationally, nearly ⅔ of the pensionable age group is female.

Education

In Moray in 2007 there were 6975 primary school pupils and 5945 secondary school pupils, an overall drop of around 3% since 2003 (comprising a 6% drop in primary pupils & a 3% rise in secondary pupils). The number of pupils over 16yrs has increased over the same period by 69%. The number of pupils from ethnic minority groups has increased from 171 in 2004 to 199 in 2007. The drop in primary school pupils is reflected nationally, as is the large rise in pupils over 16yrs. However, the rise in secondary pupils is in contrast to a national drop of 2% [10]. There are 2 data zones in Moray, 1.7% of the total, that are within the 15% most education deprived in Scotland, both of which are in Elgin [5].

In primary schools, absence figures for 2004/05 to 2006/07 are very consistent, accounting for around 4.5% of half days, of which an average of 14% is unauthorised. These figures are slightly lower than nationally. In Moray in 2004/05, truancy accounted for 43% of unauthorised absence; this fell to 17% in 2006/07. Putting these figures in perspective, truancy accounted for 7% of total absence in 2004/05, falling to 2% in 2006/07. Nationally, in 2004/05, the truancy rates were similar. However, there has been little reduction nationally over the subsequent 2 years [11].

In secondary schools, the absence rate has risen slightly, from 7.6% of half days in 2004/05 to 9.2% in 2006/07. Of this, the proportion of unauthorised absence has increased from 22% to 29%, although this fell from 32% in 2005/06. Conversely, the national absence rate has fallen slightly over the same period and Moray is now the same as nationally. The proportion of unauthorised absence has remained fairly constant at around 21%. In 2004/05, truancy accounted for 59% of unauthorised absence, falling to 38%

in 2005/06 and then rising to 44% in 2006/07. Despite this fluctuation, truancy has consistently accounted for around 13% of total absence in each of the last 3 years. The picture nationally in 2004/05 was very similar. However, as with primary schools, there has been little reduction since then [11].

Between 2003/04 and 2006/07, the rate of exclusions in Moray's primary schools has remained fairly constant at 12 per 1000 pupils. Although initially similar, the national rate has risen steadily from 11 per 1000 in 2003/04 to 16 per 1000 in 2006/07. In Moray's secondary schools, the rate has increased slightly from 59 per 1000 pupils in 2003/04 to 69 per 1000 pupils in 2006/07. Scotland's rate is much higher than in Moray but has also risen over this period from 105 per 1000 pupils in 2003/04 to 120 per 1000 in 2006/07. The vast majority of exclusions in both Moray and nationally are temporary. In Moray between 2003/04 and 2005/06 only about 6 pupils were removed from the register each year – approximately 1% of total exclusions. However, in 2006/07 just 2 pupils were removed, representing 0.4% of total exclusions. The level nationally has been around 0.5% every year since 2003/04 [12].

Of 1072 school leavers in Moray in 2006/07, 85% went on to positive destinations², 12% were unemployed but seeking employment and the remainder were either unemployed and not seeking employment or their destination was unknown. Numbers in all categories have remained fairly consistent for the last 3 years. These proportions are virtually the same nationally although the split within the positive destinations category was slightly different, with a higher proportion going into higher education and training, and less into employment. The proportion going into further education was about the same [13].

Housing

The total number of dwellings in Moray in 2007 was 41,327, a rise of 5% since 2003, slightly higher than the rise nationally of 4% [10]. In Moray, and nationally, approximately 64% of the population live in owner-occupied accommodation. However, Moray has a smaller proportion of people living in social rented accommodation, at 20% compared with 24%, but a higher percentage renting privately, 11% compared with 6%. A smaller proportion of Moray's population lives in lone parent families – 8% compared with 13% nationally, and a slightly smaller proportion of people living alone, at 12% compared with 14%. However, the same proportion of people aged 65yrs and over live on their own, in both Moray and Scotland as a whole, at 5.7% [7].

Between 2001 and 2007, the mean house sale price rose by 144% in Moray, from £58,584 to £142,956. The equivalent national figure is 104%. Over the same period, the number of house sales in Moray rose by 22%, from 1,899 to 2,312. The number of house sales also rose nationally, by 28%. The median house sale price in Moray more than doubled, from £47,000 in 2001 to £116,226 in 2007 and a similar, though slightly smaller, increase was seen nationally. The median price being lower than the mean price is reflective of

² **Positive:** includes higher education, further education, training, voluntary work and employment. This is in line with the definition of positive destinations set out in Indicator 10 of the Scottish Budget Spending Review 2007: <http://www.scotland.gov.uk/Publications/2007/11/30090722/18>

the large proportion of band A-C dwellings in Moray, approximately 68%, slightly higher than Scotland as a whole at 63%. Correspondingly, the proportion of dwellings in bands F-H is small in Moray, at approximately 6%, half that of Scotland. Between 2003 and 2007 in both Moray and Scotland, the proportion of dwellings in bands A-C fell slightly, while the proportion of dwellings in bands F-H rose slightly [10].

There are no data zones in Moray that are within the 15% most housing deprived in Scotland. However, 4 of Moray's data zones (3.4% of the total) are within the 20% most housing deprived in Scotland, 2 in Elgin, 1 in Forres and 1 in Lossiemouth [5].

Recorded crime in Moray

In Moray in 2007/08 the total number of crimes recorded reduced by 10% from 2006/07 compared with an 8% decrease in Scotland. The rate of crimes in Moray in 2007/08 was lower than nationally, at 609 per 10,000 population compared with 749 per 10,000 population. The total number of crimes recorded in each of the last 11 years shows a marginally increasing trend in Moray, compared with a reducing trend for Scotland as a whole. [14].

The percentage of crimes cleared up in Moray rose by 4% to 45% in 2007/08, compared with a 1% rise to 48% for Scotland as a whole. The trend in Moray over the last 11 years is virtually level compared with a slightly increasing trend in Scotland as a whole [14].

Within Moray there are 12 data zones in the 15% most crime deprived, representing 10.3% of data zones in Moray [5].

Overall for 2007/08, Moray was ranked 21st out of 32 local authority areas in Scotland for total recorded crimes per 10,000 population (where 1 has the highest rate and 32 the lowest). Moray's highest ranking of 2nd was for the crime category crimes of indecency, while their lowest ranking was for non-sexual crimes of violence for which they ranked 25th out of 32. In all crime categories except crimes of indecency for which they ranked higher than Scotland, Moray's ranking was better than Scotland's.

Key Community Planning Themes - Smarter

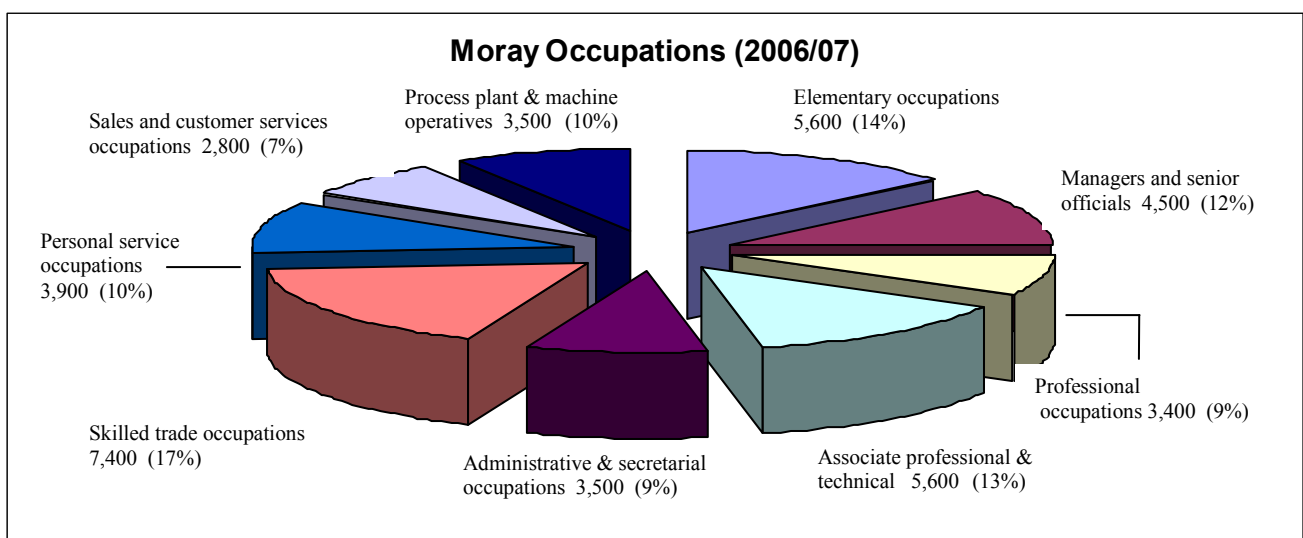
The Scottish Government's Smarter strategic objective is to expand opportunities for people in Scotland to succeed from nurture through to life long learning ensuring higher and more widely shared achievements.

This theme covers 4 main areas: We are better educated, more skilled and more successful, renowned for our research and innovation; Our young people are successful learners, confident individuals, effective contributors and responsible citizens; Our children have the best start in life and are ready to succeed; We have improved the life chances for children, young people and families at risk.

1) We are better educated, more skilled and more successful, renowned for our research and innovation

Employment Structure

In Moray, the employment structure is dominated by public sector jobs, with declining primary and manufacturing sectors. The single biggest occupational grouping is skilled trades due in large part to the RAF operations and manufacturing base in Moray accounting for 17% of the workforce. Moray is typically under represented in the higher end occupations of managers and senior officials, and professional occupations. In contrast, a higher proportion of the Moray workforce is employed in occupations at the other end of the scale – skilled trades, personal services, process plant and machine operatives, and elementary occupations – which account for 51% of the workforce compared with 39% nationally.



Working Age Population – Qualifications

In 2007, Moray had a working age population of 52,600, 60.5% of its total population. This compares to a national figure of 62.7% being of working age. Moray has a higher proportion of those of a working age who are actually in employment with 80.5%, compared to a national average of 76% [6].

The office of National Statistics [6] data show that Moray's working age population is generally less qualified in all but one of the NVQ levels than national comparisons. In the lower level qualifications, NVQ1 and above (i.e. fewer than 5 Standard Grades or equivalent), Moray's working age population has been above the national average for 3 years. At the top level, in 2007, 27% of Moray's working age population were educated to HND, degree level or equivalent, compared to 33.2% nationally. Between 2005 and 2007, Moray's performance at levels NVQ1 (fewer than 5 standard grades or equivalent) and NVQ2 (more than 5 standard grades or equivalent) has improved at a higher rate than national improvement. However, although Moray has improved at levels NVQ3 (2 or more Highers or equivalent) and NVQ4 (HND, Degree or Higher Degree), it is at a rate significantly below national improvement therefore the gap has widened since 2005. School attainment data reinforces this position, where Moray's performance has been equal to or better than comparator authorities in Standard Grades, although generally attainment, in Moray, at Higher level has been below comparator and national results.

Working Age Population Qualifications

	NVQ1 and above		NVQ2 and above		NVQ3 and above	
	Moray	Scotland	Moray	Scotland	Moray	Scotland
2005	79.4%	78.6%	66.8%	67.9%	44.9%	50.3%
2006	79.5%	79.3%	67.7%	68.9%	45.3%	51.3%
2007	81.3%	79.2%	68.5%	68.9%	45.7%	51.7%

	NVQ4 and above		Other Qualifications		No Qualifications	
	Moray	Scotland	Moray	Scotland	Moray	Scotland
2005	25.9%	30.6%	8%	6.7%	12.5%	14.7%
2006	27.5%	32.1%	6%	6.9%	14.6%	13.7%
2007	27.0%	33.2%	6.3%	7.3%	12.4%	13.5%

Job Related Training

For those in employment, data from Scottish Neighbourhood Statistics [10] suggests that, in Moray, the percentage of all employees who received job related training in the 3 months prior to interview fell from 34% in 2004 to 26% in 2006. During this period the Scottish rate also decreased but to a lesser extent from 31% in 2004 to 30% in 2006.

Highlands and Islands Enterprise (HIE) Moray, Business Research report, published in July 2007 [18] concluded that most organisations were undertaking some form of formal, as distinct from on-the job training. In most

cases this was driven by regulation, achieving industry or customer standards, or related to operating machinery. The level of awareness expressed by the majority of organisations had increased in relation to the benefits of training and that most employment was semi-skilled or skilled and there were few unskilled jobs reported.

During HIE Moray's research interviews, they were keen to explore beyond training and training courses to cover more strategic issues such as people development, and increasing the knowledge and innovative capacity of the organisation. For most organisations these were esoteric concepts that were completely irrelevant to them.

HIE, in 2006/07, reported that 44 young people were participating in Get Ready for Work, funded by the Enterprise Networks and delivered by local training providers its target group is young people between 16 and 17 years of age with additional support needs; 149 participated in mainstream Skillseekers Programme, targeting 16-19 year olds with Local Enterprise Companies having discretion to fund training for 18-25 year olds; 480 young people participated in the Modern Apprenticeships Programme, which were initially for 16-24 year olds, however the upper age limit was removed and in addition Local Enterprise Companies have discretion to fund Modern Apprenticeships of age 25 and above in sectors which it has identified as having national or regional economic importance. Participation in all programmes has increased from 2005/06 results.

	% of all no job related training		% all job related training	
	Moray	Scotland	Moray	Scotland
2004	65	69	34	31
2005	69	70	31	30
2006	74	70	26	30

Adult Literacy, Numeracy

It is estimated that 23% of the adult population in Scotland have low levels of literacy. With an adult population in Moray at 69,940 this could possibly be as many as 15,791.

The Adult Literacy and Numeracy End of Year Report 2006/07 [15] showed that demand of adult literacy and numeracy increased by 39% to 397 people in need that asked for support. In 2007/08, the number of adults being supported through the Essential Skills programme was 188, in the first quarter of 2008/09 the number has already reached 93 which shows a marked increase from the same period last year. Although the numbers asking for support increased over the past 3 years, it remains well below the estimated need.

Essential Skills have so far managed to meet demand for Adult Literacy and Numeracy but some areas, notably Elgin and Buckie, are working at full capacity.

The Workers Education Association provide educational opportunities for literacy learners in the workplace. A large part of their job is raising awareness and trying to change the culture in traditional industries to promote personal development for all staff. This is challenging in a climate of small and medium sized enterprises. They presently do not have a waiting list.

Moray College has reviewed the way it supports students with literacy problems and has implemented a new strategy. This will make inroads into meeting both demand and need. This strategy will move away from a “deficit” model of literacies to one where literacy support is an integrated aspect at all levels of curriculum provision. This will help the college to identify students who need additional help to make the most of their educational programmes.

The Scottish Government with the anticipated first results available in mid 2009 is currently developing a national Adult Literacy and Numeracy in Scotland survey, but it is unlikely that data will be available for all local authorities at this point.

The percentage of the population making use of Learning Centres and Learning Access Points continues to rise in Moray [16], with 16.5% making use of these facilities in 2006/07, above the national level of 10.7% and comparator average level of 10.9%.

School Leaver Destinations

Scottish Government publish statistics on school leaver destinations [17] providing further evidence that a high proportion of school leavers in Moray, 35% in 2006/07 compared with 28% nationally and 31% in comparator authorities go on to employment, suggesting a link to Morays’ predominately low skilled workforce and limited managerial employment opportunities, potentially reducing the likelihood of children returning to the area following full time study.

The proportion attending full-time higher education has decreased by 2% to 25% in 2006/07 compared with 30% nationally and 29% in comparator authorities. This decrease may represent some pupils’ choice for a more vocational based course as evidenced by the 1% increase in the number of leavers entering full time further education in 2006/07.

	Full time higher education			Full time further education		
	2004/05	2005/06	2006/07	2004/05	2005/06	2006/07
Moray	25%	27%	25%	25%	23%	24%
Comparators	31%	31%	29%	23%	25%	24%
Scotland	31%	30%	30%	21%	23%	23%

	Training			Employment		
	2004/05	2005/06	2006/07	2004/05	2005/06	2006/07
Moray	1%	2%	1%	33%	33%	35%
Comparators	3%	3%	4%	29%	29%	31%
Scotland	5%	5%	5%	27%	26%	28%

	*Other known destinations			Destination unknown		
	2004/05	2005/06	2006/07	2004/05	2005/06	2006/07
Moray	14%	12%	14%	2%	3%	1%
Comparators	11%	12%	11%	3%	3%	1%
Scotland	13%	13%	12%	3%	2%	1%

* Other known destinations include – Unemployed and seeking employment or training / Unemployed and not seeking employment or training

Summary and emerging trends

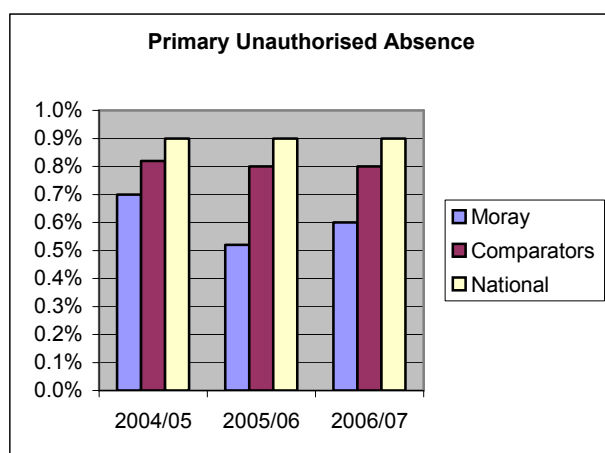
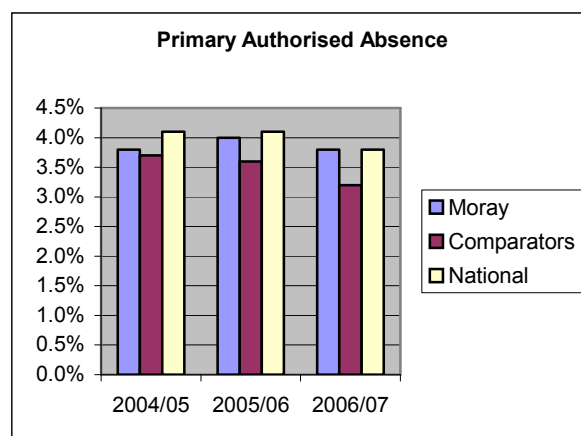
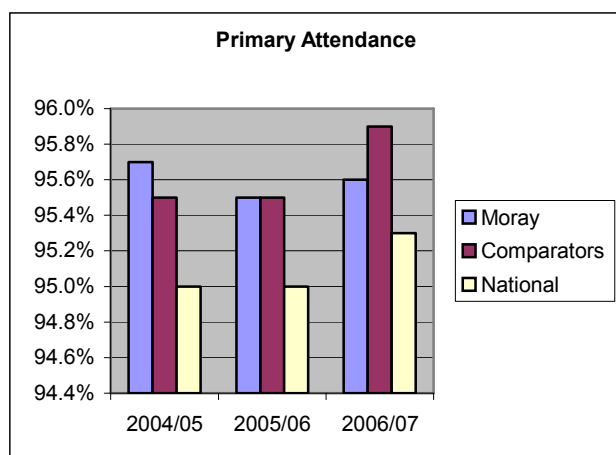
- Moray has a higher employment rate than national however has the lowest weekly wage average in Scotland
- Moray's working age population with lower level qualifications, of fewer than 5 standard grades, is above national levels between 2005 and 2007
- The number of working age population achieving lower level qualifications has increased at a higher rate than national
- Moray continues to lag behind the national figure for working age population holding/gaining qualifications above NVQ1 level
- The number of working age population in all higher level qualifications has improved at a slower rate than national
- The lack of a higher qualified working population in Moray is a strong link to the low skilled, low wage employment market in Moray
- There is an unmet demand for Adult Literacy and Numeracy support in Moray
- The percentage of the Moray population making use of Learning Centre and Learning Access point users continue to be above national and comparator levels
- The percentage of school leavers in Moray going on to full time higher education has been lower than comparator authority and national levels for the past 5 years
- In Moray, the majority of jobs are located in the service sector
- The percentage of employees who received job training in the 3 months prior to interview decreased at a higher rate than national decline
- The percentage of employees who have not received job related training is increasing at a higher rate than national improvements

2) Our young people are successful learners confident individuals, effective contributors and responsible citizens

Attendance and Absence

Attendance at Moray Primary Schools' [19] increased by 0.1% to 95.6% in 2006/07, remaining above the national average which increased by 0.3% to 95.3%, however below comparator authorities' average of 95.9%. In Moray, attendance since 2004/05 had decreased by 0.1% but remained relatively consistent over that period. Both national and comparator authorities' averages have increased since 2004/05.

Primary	Attendance			Authorised Absence			Unauthorised Absence		
	2004/05	2005/06	2006/07	2004/05	2005/06	2006/07	2004/05	2005/06	2006/07
Moray	95.7%	95.5%	95.6%	3.8%	4.0%	3.8%	0.7%	0.5%	0.6%
Comparators	95.5%	95.5%	95.9%	3.7%	3.6%	3.2%	0.8%	0.8%	0.8%
National	95.0%	95.0%	95.3%	4.1%	4.1%	3.8%	0.9%	0.9%	0.9%

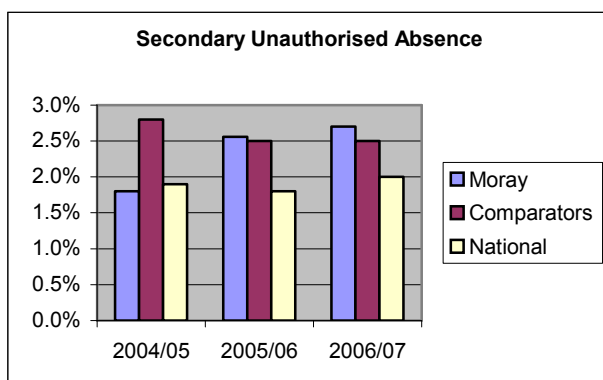
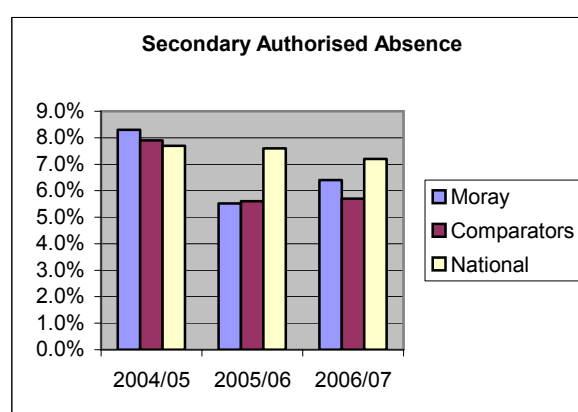
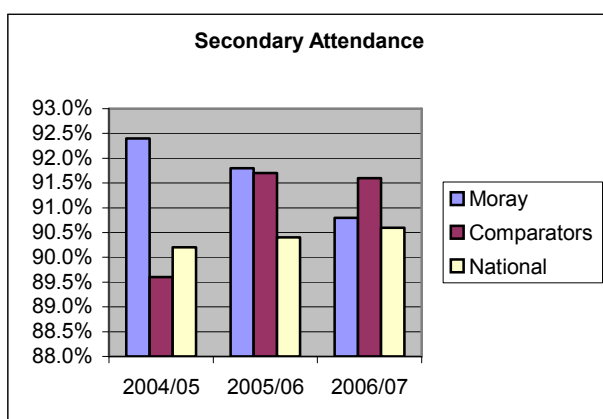


The level of unauthorised absence at Moray Primary Schools increased by 0.1% to 0.6% in 2006/07, remaining below national and comparator authorities' average levels, which have remained static at 0.9% and 0.8% over the last 3 years. Authorised absence, in Moray, has remained relatively static at 3.8%, where comparators and national levels have dropped.

Attendance at Moray Secondary Schools [19], when comparing results with 2005/06, had decreased by 1%. (There had been a 0.9% increase in authorised absence during the same period). Incorrect coding of study leave

within one secondary school adversely affected 2006/07 published figures. Accepting the 2006/07 results as published, Moray remains above the national average but below comparator authorities' average. There would be a positive change in its position against comparator authorities when taken into account the coding error.

Secondary	Attendance			Authorised Absence			Unauthorised Absence		
	2004/05	2005/06	2006/07	2004/05	2005/06	2006/07	2004/05	2005/06	2006/07
Moray	92.4%	91.8%	90.8%	8.3%	5.5%	6.4%	1.8%	2.6%	2.7%
Comparators	89.6%	91.7%	91.6%	7.9%	5.6%	5.7%	2.8%	2.5%	2.5%
National	90.2%	90.4%	90.6%	7.7%	7.6%	7.2%	1.9%	1.8%	2.0%

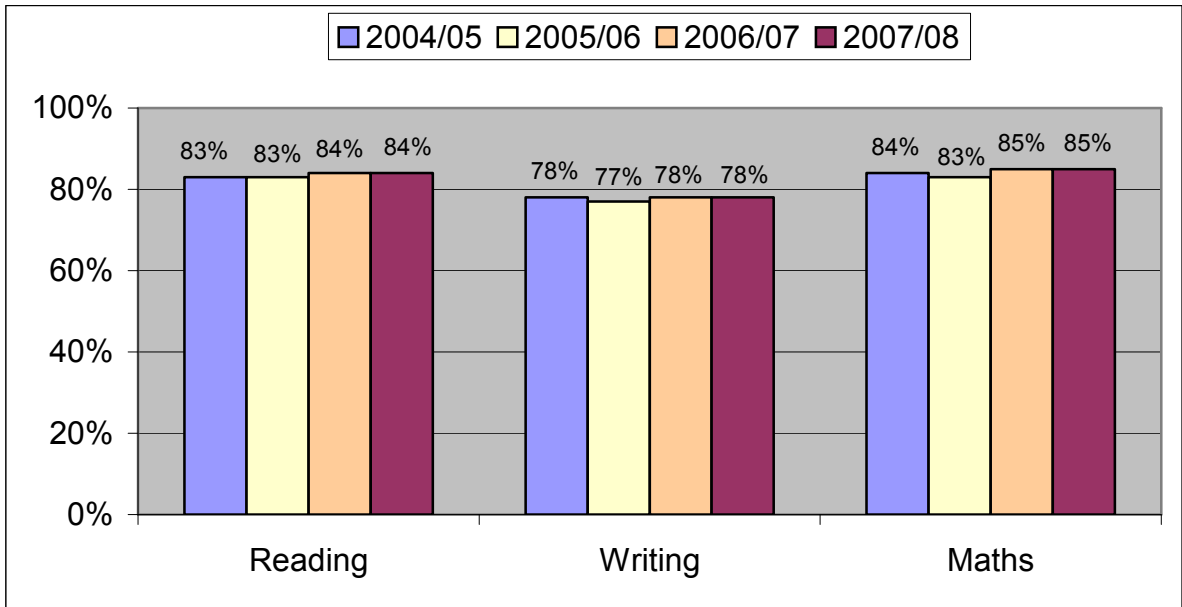


The level of unauthorised absences in Moray Secondary Schools had increased from 2005/06 by 0.1% to 2.7%, remaining above comparator authorities' average of 2.5% and the national average of 2%. Unauthorised absence has increased by 0.9% since 2004/05.

Attainment

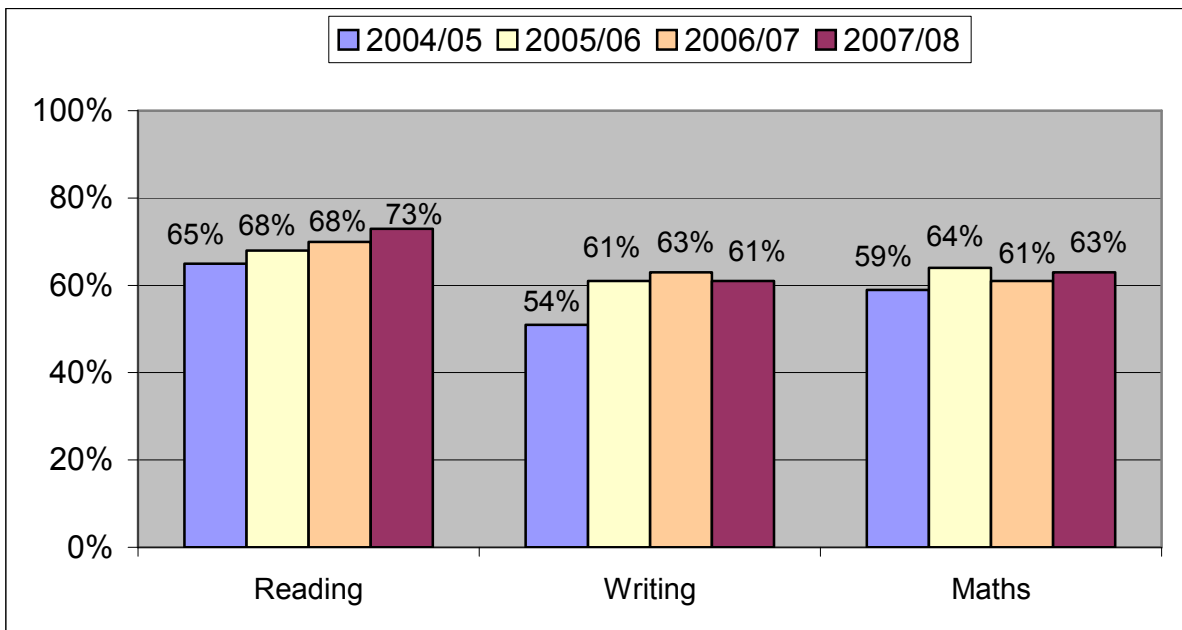
Although the information is no longer collected nationally, many local authorities monitor 5-14 attainment in relation to the percentage of pupils attaining or exceeding 5-14 levels for their age. For primary and secondary schools the 5-14 indicators cover the core skills of reading, writing and mathematics.

Primary	2004/05	2005/06	2006/07	2007/08
Reading	83%	83%	84%	84%
Writing	78%	77%	78%	78%
Maths	84%	83%	85%	85%



In reading, writing and mathematics, results in Moray Primary Schools remained unchanged from the previous years' performance with 84% of pupils in reading, 78% in writing and 85 % in maths achieving or exceeding expected levels. In 2006/07, primary pupils attaining or exceeding 5-14 levels for their age in Moray were ranked 3rd equal in Reading, 3rd in Writing and 4th in Mathematics against Moray's five comparator authorities.

Secondary	2004/05	2005/06	2006/07	2007/08
Reading	65%	68%	70%	73%
Writing	51%	61%	63%	61%
Maths	59%	64%	61%	63%



In two of the three areas there was an improvement in performance in Moray Secondary Schools in 2005/06. In 2006/07, there was a further 2% improvement in the performance for reading and writing but a drop of 3% in mathematics. In 2007/08, there was a further 3% increase in reading to 73%, a 2% improvement in Maths to 63% but performance in writing dropped by 2% to 61%. In 2006/07, secondary pupils attaining or exceeding 5-14 levels for their age in Moray were ranked 1st in Reading, 1st in Writing and 3rd in Mathematics against four comparator authorities (the fifth comparator authority no longer records secondary 5-14 results).

In general, in years three and four, young people in Moray secondary schools follow national qualifications courses or Standard Grade. Qualifications can be compared using the Scottish Credit and Qualifications Framework (SCQF). The framework concerns the way in which qualifications can be compared in order to simplify progression between them. Moray's pupils achieve good results throughout their primary school years and through to S4. Results for S5 and S6 are not as good as national and comparator authorities and require more work [20].

Term	Explanation
Level 3	Standard Grade at Foundation Level or Access 3
Level 4	Standard Grade at General Level or Intermediate 1
Level 5	Standard Grade at Credit Level or Intermediate 2
Level 6	Higher Grade at A-C

Percentages of S4 roll attaining, by the end of S4:

	English at Level 3 or better			Maths at Level 3 or better		
	2005/06	2006/07	2007/08	2005/06	2006/07	2007/08
Moray	96	96	94	96	96	94
Comparators	94	94	94	92	95	93
National	94	94	94	93	93	94

	English & Maths at Level 3 or better			5 or more awards at Level 3 or better		
	2005/06	2006/07	2007/08	2005/06	2006/07	2007/08
Moray	94	94	92	92	93	90
Comparators	90	92	91	90	91	90
National	91	92	91	91	91	90

	5 or more awards at Level 4 or better			5 or more awards at Level 5 or better		
	2005/06	2006/07	2007/08	2005/06	2006/07	2007/08
Moray	80	83	80	36	35	37
Comparators	78	78	77	35	35	36
National	76	76	76	34	33	34

Results for S4 students in Moray have decreased in all but one of the six categories since last year, however Moray remain equal to or above the national average in all areas. Nationally attainment has remained relatively static over the last three years with 4 areas staying the same, 1 area improving and 1 decreasing. Comparator authorities gained some ground on Moray with 3 areas improving, 1 decreasing while the other 2 areas have

remained static. The 2006/07 Education Service Improvement Plan actions included improving performance for students gaining five or more awards at Level 5, which was achieved with 37%, exceeding a target of 36%, a 1% increase over the last three years.

Moray has five comparator authorities - Angus, Dumfries and Galloway, Falkirk, Highland and Scottish Borders. Moray was ranked 1st or 2nd in attainment in Maths at Level 3, English and Maths at Level 3, five or more awards at Levels 4 and 5 and ranked 4th in the remaining two categories of English at Level 3 and five or more awards at Level 3.

Percentages of S4 roll attaining, by the end of S5:

	1 or more awards at Level 6 or better			3 or more awards at Level 6 or better		
	2005/06	2006/07	2007/08	2005/06	2006/07	2007/08
Moray	38	40	41	20	20	21
Comparators	40	40	40	23	22	23
National	38	39	38	21	22	22

	5 or more awards at Level 6 or better		
	2005/06	2006/07	2007/08
Moray	9	8	7
Comparators	10	9	10
National	9	10	10

Level 6 results for S5 pupils in Moray have increased in two of the three categories from the previous years' performance, whereas nationally, results remained unchanged or decreased. Moray remains above the national average in pupils achieving one or more award at Level 6 but below in the two remaining categories.

Against comparators, Moray ranked 2nd in attainment in one or more awards at Level 6 and 5th in three and five or more awards at Level 6.

Percentages of S4 roll attaining, by the end of S6:

	1 or more awards at Level 6 or better			3 or more awards at Level 6 or better		
	2005/06	2006/07	2007/08	2005/06	2006/07	2007/08
Moray	44	43	45	29	27	31
Comparators	45	44	44	31	31	30
National	43	42	43	30	29	30

	5 or more awards at Level 6 or better			1 or more awards at Level 7 or better		
	2005/06	2006/07	2007/08	2005/06	2006/07	2007/08
Moray	18	18	19	12	11	13
Comparators	21	21	19	14	13	13
National	20	19	19	13	12	12

Moray's performance has improved in all four categories in S6, and is now equal to or above national averages in all categories. Nationally, performance

from the previous year has remained unchanged in two categories and increased in two categories.

Against comparators, Moray ranked 3rd in attainment in one or more awards at Levels 6 and 7 and 4th in three and five or more awards at Level 6.

Schools – Environmental, Travel and Healthy Eating

Eco-Schools is an international initiative designed to encourage whole-school action for the environment. It is an environmental management tool, learning resource and recognised award scheme. Moray schools have embraced national initiatives, which support wider achievement of its pupils. In 2007/08, 98% of Moray schools are registered Eco Schools, which is higher than the national average of 91%.

Percentage and number of school participating in the Eco Schools award or similar accredited environmental award –

2007/08	Registered	Bronze Award	Silver Award	Green Flag Award
Primary	100% (46)	83% (38)	50% (23)	7% (3)
Secondary	88% (7)	75% (6)	25% (2)	13% (1)

The Moray Council has a dedicated team working with schools to develop and implement the travel planning process. In 2008, the team conducted a 'Hands Up' survey with 6,212 (88% of the total school roll using September 2007 census data) Primary and 2,878 (48% of the total school roll using September 2007 census data) secondary school pupils participating –

Primary		Secondary	
Walk	48%	Walk	46%
Car	31%	Car	15%
Bus	12%	Bus	30%
Park and Stride	4%	Park and Stride	4%
Cycled	2%	Cycled	5%
Taxi	2%	Taxi	1%
Scooter / Skateboard	1%	Scooter / Skateboard	-

In 2006/07, 83% of Moray schools were engaged in the travel planning process with 15% of schools having completed travel plans. School Travel Plans aim to stem the decline in the number of children taking an active journey to school, offer a holistic approach to infrastructure improvements that prioritise active modes, improve safety for all users and draw effective links with supporting policies, i.e. Eco Schools, Health Promoting Schools, Active Schools and Local/Regional/National Transport Policies.

The Moray Council have taken measures to improve safety and access for active modes by introducing 20mph speed limits outside schools; by providing safe, secure cycle parking at 21 schools totalling 660 spaces, 410 of which are within fully enclosed, locking compounds; by undertaking footway

improvements and establishing cycle routes between schools and key areas of housing; by introducing School Travel Awards and Travel Smart incentive schemes to celebrate success and share best practice and reward active travel as well as setting up walking buses and cycle trains; by educating parents and pupils about active travel in holding School Travel Awareness days, including travel surveys and route planning; organising walk/cycle to school weeks; participating in assembly and classroom talks and offering induction and open days for parents.

The Moray Council is compiling information to feed into the 2008 Sustrans national survey with results expected in Spring 2009.

Health promotion schools encourage children and young people to eat well and to exercise encompassing a broad holistic 'whole school' approach that includes promoting the physical, social, spiritual, mental and emotional well-being of all pupils and staff.

As at November 2007, 21 of the 54 primary and secondary schools in Moray have achieved 'commitment' status and 8 schools have achieved 'commended' as Health Promoting Schools.

Extra Curricular / Community Involvement

Moray pupils contribute to both school and community life. Pupils participated in theatre through the Elgin Macbeth, a Highland 2007 event between Moray Council and the National Theatre of Scotland. A professional cast of 5 and a professional production team worked for 9 months with 60 community members including a Gaelic choir and musicians and 160 pupils from 5 Moray secondary schools. 800 people attended the performances held in June 2007 in the ruins of Elgin Cathedral. Schools also created visual arts installations in various parts of the cathedral.

In terms of sport, 1,500 children were involved in the Council's term time and holiday sports coaching programme in 2006/07. In the past year at least 18 young people have competed in sporting activities at a national / international level. In 2007/08, 1,248 P3-P7 pupils participated in after school 'Stay and Play' activities.

Moray pupils also regularly participate in musical groups with approximately 75% of instrumental instruction pupils participating in school groups. 265 pupils attend the Moray Music Centre on a weekly basis with another 75 participating in the weeklong Moray School Orchestra course. 20 pupils from Fochabers Fiddlers have toured America while another 60 pupils toured Europe with Moray Concert Brass. Moray Concert Brass have placed or won the Scottish Brass Championship for the last three years. Approximately 25 pupils per year take part in the National Youth Orchestra for Scotland, National Youth Choir and National Fiddle Competitions, which is slightly above average compared to other local authorities without specialist music schools. The Moray Music Festival is held every two years over a 10-day period and provides an opportunity to compete in music, dance, speech and

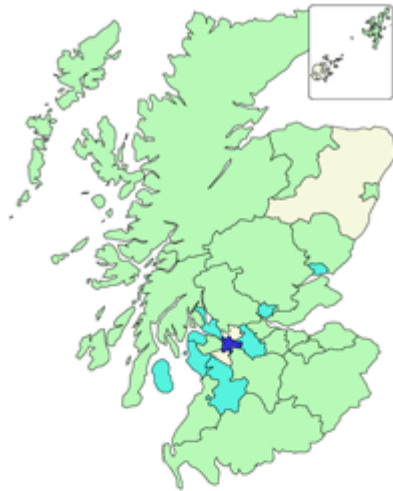
drama for both adults and children. In 2007, 32 of the 46 primary schools and 8 of the secondary schools had entries in the Festival.

Summary and emerging trends

- In 2006/07, attendance in Moray Primary Schools remained relatively static over the last three years while national and comparator levels have increased
- Unauthorised absence in Moray Primary Schools as with comparator and national averages have remained relatively static
- It was anticipated that, taking account of a coding error, attendance in Moray Secondary Schools would be above national average levels in 2006/07
- In 2006/07, unauthorised absence in Moray Secondary Schools was above national and comparator authorities' average levels
- Performance in the percentage of primary pupils in Moray attaining or exceeding 5-14 levels for their age in the core skills of reading, writing and mathematics improved between 2005 and 2007 but remained unchanged in 2008
- In 2008, there was a further improvement in the percentage of secondary pupils in Moray attaining or exceeding 5-14 levels for their age in reading and mathematics but a drop in performance for writing
- In 2008, S4 attainment levels were ahead or equal to that of national and all other comparator authorities' averages in all six indicators
- In 2008, performance in S5 attainment for Higher Grades was below national and comparator authorities' averages in two of the three indicators
- In 2008, performance in S6 attainment for Higher Grades was ahead or equal to national averages in all four indicators
- 98% of schools in Moray are registered Eco-Schools, above the national average
- In 2006/07, 83% of Moray schools are engaged in travel planning process, 15% have completed travel plans
- As at November 2007 54% of schools in Moray had achieved either 'commitment' or 'commended' status as Health Promoting Schools
- Pupil Council have been established in all schools in Moray, Parent Councils have been established in 53 of 54 schools

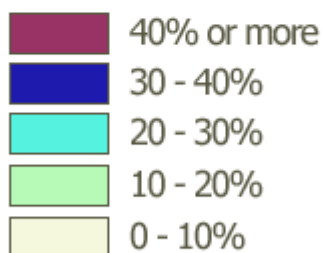
3) Our children have the best start in life and are ready to succeed

Child Poverty



Colour Key:

% of children in families on out of work benefits



Map of child poverty levels by Local Authority.

End Child Poverty [24] use tax credit data to give the percentage of children on low incomes in local authorities across the UK. Although not a direct measure of exactly how many children are in poverty, it is a good indication of which areas have the highest child poverty levels and the closest measure at the moment of local levels of child poverty. The End Child Poverty indicator considers all children whose families receive the maximum Child Tax Credit because they have low incomes, whether working or on benefits. They are divided into two groups:

Children in workless families shows how many children are in families claiming tax credits who also depend on benefits, because nobody in the family is working (or nobody is working for more than 16 hours a week). These tend to be the poorest families. Without a working parent, a child has a three in four chance of being in poverty.

Children in families receiving the Working Tax credit indicates how many children are in the poorest working families – those entitled to maximum Child Tax Credit, plus a Working Tax Credit entitlement related to their earnings. One in three of such children do not escape family poverty even with the help of the tax credit, and half have incomes that are below or only just above the poverty line.

Adding these two groups together gives a total of children in low-income families. This comprises about four in ten children. While not all these children are classified as being in poverty, they represent a wider group of “have-nots” among children in the UK, which allows a comparison of the severity of the problem in different local authorities and parliamentary constituencies.

Results for August 2005 show that Moray has a child poverty level of 13%, below the average level of 19% amongst the 59 Scottish constituencies. Glasgow North East at 44% has the highest level of child poverty and at 7%;

East Dumbartonshire, Gordon and West Aberdeenshire and Kincardine have the lowest level of child poverty.

Low Birthweights

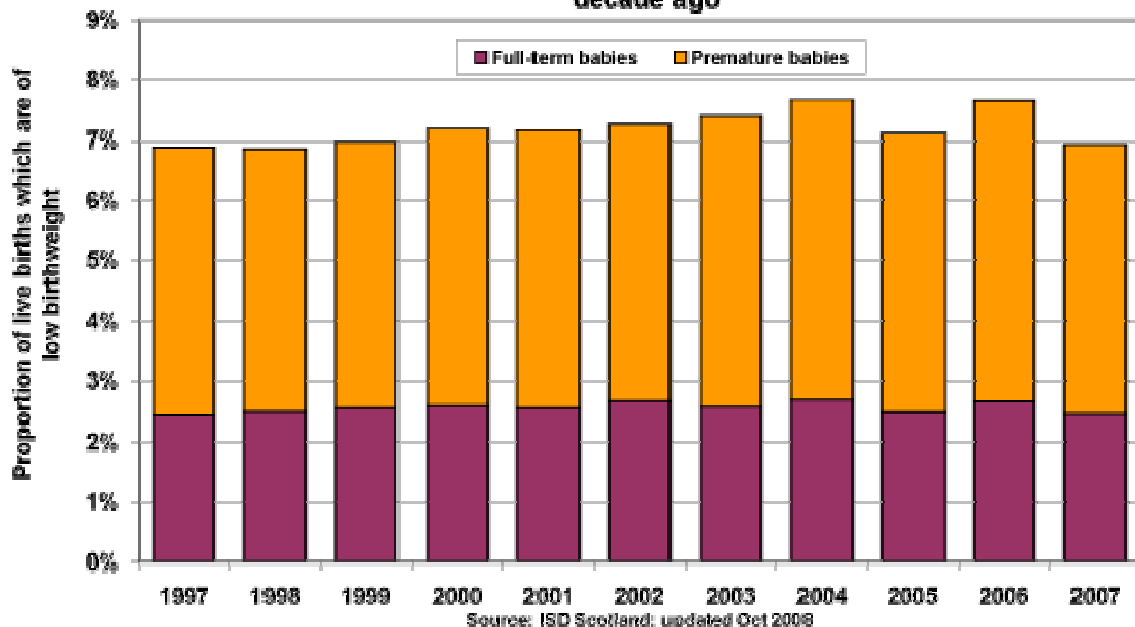
The Scottish Morbidity Record (SMR02) [25] [26] is submitted by maternity hospitals to ISD Scotland. This data scheme collects data on inpatient and day case activity in the specialty of obstetrics. A wide range of information is collected, including: mother's age, height, smoking history and previous obstetric history; outcome of pregnancy, mode of delivery, induction and analgesia; and baby's birthweight, gestation, apgar score and gender. This information has been collected since 1975. Although there is no legal requirement to submit this data to ISD, the SMR02 data scheme achieves national coverage of 98% of all births and pregnancies.

The Information Service Division (ISD), Scotland's national organisation for health information and statistics report that the proportion of babies who are of low birthweight is similar across most of Scotland and has remained relatively unchanged over the last decade.

A number of factors have been shown to be associated with low birthweight (i.e. 2.5 kilograms / 5.5lbs) and/or preterm births. These include maternal smoking, maternal age (older and younger mothers are more likely to have a low birthweight baby), deprivation, previous obstetric history, low pre-pregnancy maternal weight, drug/alcohol use, hypertension and multiple births.

Over time -

The proportion of babies born with a low birthweight is similar to a decade ago

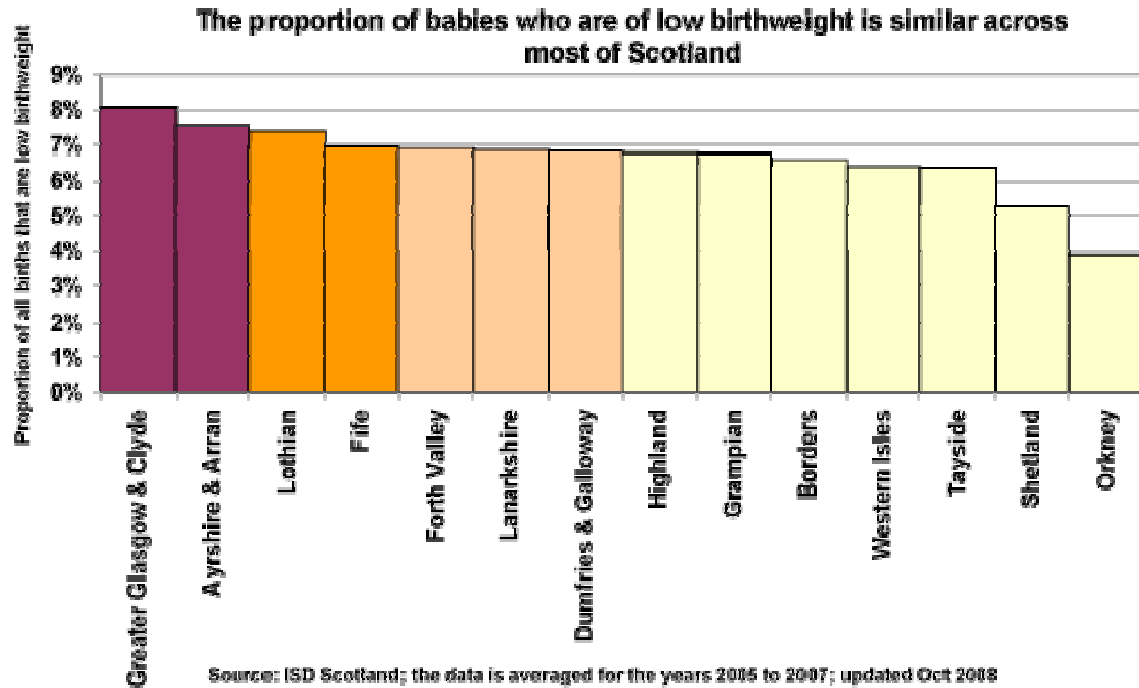


The graph shows the proportion of live births who are defined as having a low birth weight, i.e. less than 2.5 kilograms (5.5lbs). The data is shown

separately for full-term and premature babies. The data is for all live births, both premature and full-term and for singleton and multiple births. It excludes still-births, home births and births at non-NHS hospitals.

Low birthweight babies face a range of future health problems both immediate and longer-term: poor health in the first four weeks of life, a higher risk of death before the age of two and delayed physical and intellectual development in early childhood and adolescence among them.

By local health authority



The graph shows how the proportion of live births that are of a low birthweight varies by NHS Health Board. To improve statistical reliability, the data is the average for the latest three years.

Provisional statistics report that for the year ended 31st March 2007 in Grampian 6.96% (409) of all births were of a low birthweight, against a Scottish average of 7.15% (3,956). Results differ only slightly from those a decade ago, as at March 1997, in Grampian 6.3% of births were of a low birthweight against a Scottish average of 7.2% for the same period. Statistics at a Moray level are not available.

Smoking during Pregnancy

Smoking behaviour in pregnancy is collected at a woman's first antenatal booking appointment which usually takes place within the first three months of pregnancy. These booking appointments take place either at hospital or in the community and are recorded on the Scottish Morbidity Record (SMR02). There is considerable pressure on women not to smoke during pregnancy, and it is anticipated that some women may not be completely truthful when describing their smoking behaviour at the booking clinic.

ISD Scotland provision statistics report that in Grampian, for the period ended 31st March 2007, at a woman's first antenatal booking appointment, for the 5,781 bookings recorded, 69.8% stated that they had never smoked, 20.3% stated that they were currently smoking and 7.8% stated that they were former smokers. Nationally, for the same reporting period, 57.7% had never smoked, 20.9% were currently smoking and 9.5% were former smokers. Overall, levels of smoking recorded at a woman's first antenatal booking appointment have decreased since 1998 although increases during the period are evident.

Children's Dental Health

Moray experiences difficulties in attracting dentists. As at September 2007, dental registration for children in Moray was 52.3%, well below the national average of 69.9%.

Life Expectancy

The General Register Office from Scotland statistics show that, for the years 2005-2007, the life expectancy at birth in Moray for males was 75.9 years, above the national average of 74.8 years and for women was 80.2 years, above the national average of 79.7 years. Overall the life expectancy at birth in Moray at 78.0 years is above the national average of 77.4 years.

Pre-School Provision

In Moray [27] in 2008, there were 55 local authority or partnership pre-school education providers in Moray, 22 were local authority pre-school education providers and 33 providers were in partnership with the local authority.

There were 690 registrations for the ante-pre-school year of pre-school education in Moray representing 96.9% of all children eligible, above the national result of 94.2%.

There were 850 registrations for the pre-school year of pre-school education, representing 102.9% of all children eligible, above the nation result of 98.3%.

The percentage of children attending pre-school education in an area can exceed 100% due to double counting or children commuting from their home areas to attend pre-school provision in another local authority area.

Based on the 2008 census data received, in Moray 40 children registered for pre-school education did not have English as their home language, 2.1% of all registrations, below the national average of 4.4%. Seventy children were reported as having Additional Support Needs, 4.2% of all registrations, which was below the national average of 5.5% and 20 pre-school children, had a Co-ordinated Support Plan, 1.4% of all registrations, above the national average of 0.7%.

Class Sizes

In Moray, the average class size [21] in all classes was 22.8, an improvement from 23.3 in 2006, remaining just above comparators authorities' average of 22.3 but below the national average of 23.3. In single stage classes, Moray's average class size has decreased from 24.8 in 2006 to 24.3 in 2007, remaining below comparator authorities' and the national averages of 24.7 and 24.8 respectively. In composite classes, Moray's average class size has decreased from 20.5 in 2006 to 19.7 in 2007, remaining slightly above comparator authorities' average of 19.3 but below the national average of 20.0. In 2007, Moray's average class sizes were above that of our comparator averages in two of the three categories but below national averages in all categories.

In Moray, with the exceptions of Primary 1 and Primary 7, average primary class sizes in all other class stages were below comparator authorities' averages and the national average.

Class size bandings have changed from the 2006 census and Primary 1 results are now reported separately, making comparisons between years more complex. In 2007, the highest proportion of pupils in Primary 1 (86%) were taught in classes of between 19 to 25 pupils, a position mirrored in comparator and national statistics. The highest proportion of pupils in Primary 2 and Primary 3 stages (88%) were taught in classes of between 19 to 30 pupils, again a similar position in comparator and national averages. The highest proportion of pupils in Primary 4 to Primary 7 stages (90%) were taught in classes of 30 or fewer pupils. In 2006, 48% of pupils were taught in classes of between 26 and 30 pupils and 45% in classes of fewer than 20 to 25.

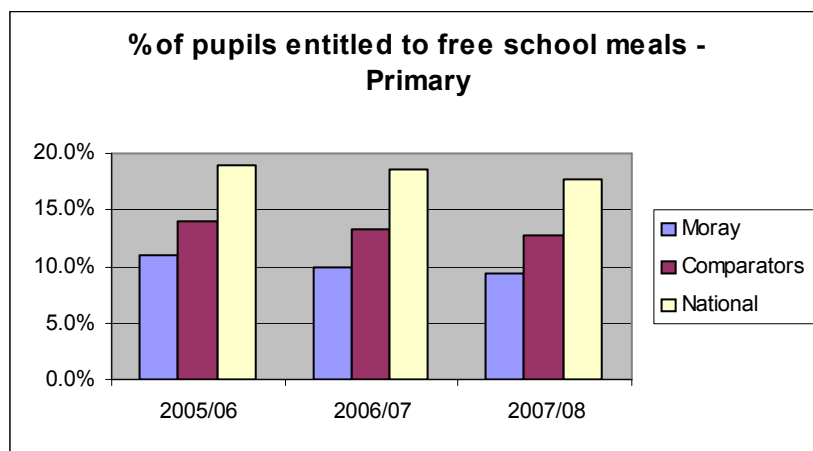
Minority Groups

In recent years there has been increasing numbers of Polish and Portuguese families coming to the area for economic reasons. There were 201 pupils categorised as being from a minority ethnic group [21], 244 categorised as white other and 114 as not known / undisclosed. Of the 13,002 pupils in publicly funded schools in Moray there were 246 pupils (1.9%) whose main home language is neither English, Gaelic, Scots Doric, nor Sign Language, below the national average of 3.4%. Moray has 35 languages with the three main languages, after English, reported as Polish, Scots and Portuguese. There were 185 pupils reported as having English as an additional language.

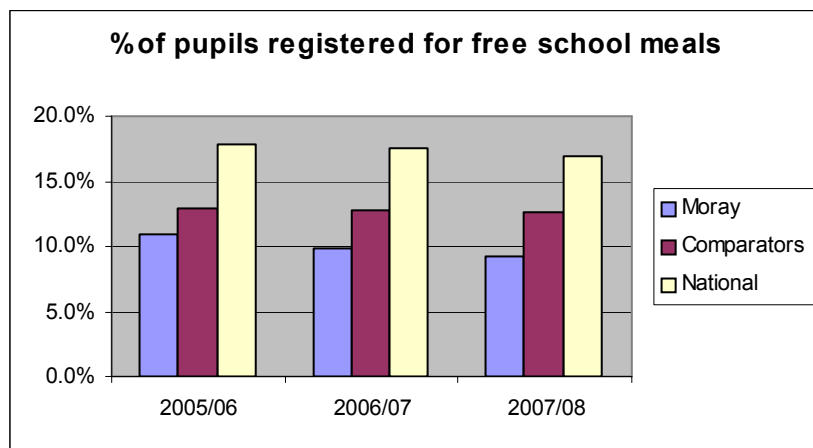
Provision of School Meals

The Scottish Government Statistical Notice [22] was published on 24th June 2008 on the results of the latest annual survey of school meals undertaken in early 2008.

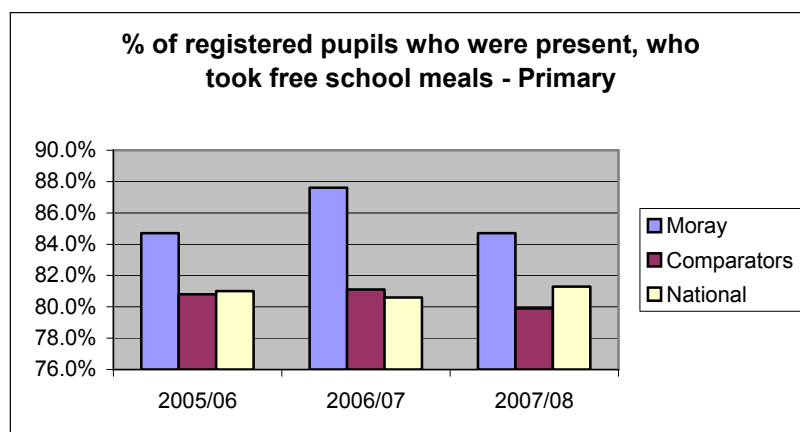
In Moray, over the past 3 years, there has been a lower level of entitlement to free school meals for Primary pupils in comparison to our comparator authorities' and national averages. Pupils entitled to free school meals are those within families who received Income Support (IS) or Income-based Job Seekers Allowance (IBJSA). Those within families who received support under Part VI of the Immigration and Asylum Act 1999 may also be entitled. Children who receive IS or IBJSA in their own right are also entitled to free school meals. Also entitled are children whose parents or carers receive Child Tax Credit, do not receive Working Tax Credit and have an annual income (as assessed by the Inland Revenue) of below £14,995. All parents are provided with details of free school meal entitlement criteria and application instructions, it is thereafter the parent's decision as to whether they submit an application.



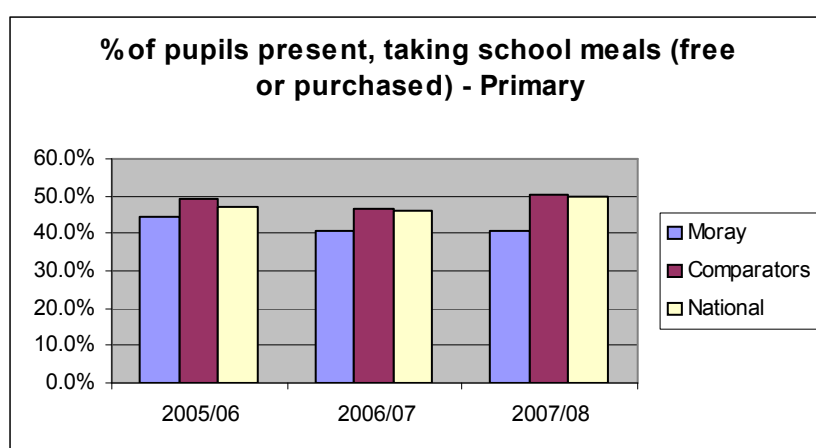
In Moray, there were 7,055 pupils on the primary school roll, with 664 entitled to free meals and 649 registered. 605 registered pupils were present on census day with 550 of those taking free meals.



In Moray, 9.4% of the primary school roll was entitled to receive free school meals, remaining lower than national comparator authority levels. 9.2% of the primary school roll was registered to receive free meals.



Of those primary pupils registered for free school meals and present on census day, 84.7% took a free school meal, remaining above that of comparators authorities' (79.9%) and national (81.3%) average levels.



Of the 6,706 pupils present on school meals census day, 2,737 (40.7%) of primary pupils took either a free or purchased school meal, below that of comparator authorities' (50.3%) and national (49.6%) average levels. Moray's result equalled that of the previous reporting year, against increase in comparator authorities' and national averages.

Primary Education	2004/05	2005/06	2006/07
Number of meals	541,031	538,624	466,152
Expenditure on school meals	£326,000	£354,000	£464,000

Primary Education	2006	2007	2008
Price charged per standard school meal	£1.70	£1.75	£1.80

School meals in Moray offer a selection of up to three main course items and a choice of puddings, fresh fruit and yoghurt. Children can sit down together and enjoy their meal, whilst at the same time developing those social skills of

eating together that are important later in life. A well-fed and happy child is more likely to be receptive to participating in the afternoon's activities. The school meal aims to provide essential nutritional requirements that will assist children in leading a 'bright and healthy' lifestyle.

In April 2008, Moray Council launched the 'Be Bright, Eat Right' initiative focused on encouraging children throughout Moray back into the school canteen at lunchtime to enjoy healthy, wholesome school meals. Results have shown an increase in school meal uptake throughout primary schools and it is expected that this will be reflected in 2009 Scottish Government Statistics publication notice.

In Moray, all primary schools operate an anonymised system for recipients of free school meals, significantly above that of our comparator authorities' and national average levels. Access to drinking water is provided in all primary schools with 91% of schools providing access to drinking water in accordance with the Scottish Government definition, remaining above the national level.

In line with the Scottish Government guidelines on healthy eating, all Primary 1 and Primary 2 pupils received free fruit at least 3 times per week.

Community Learning and Development

Community Learning and Development target their resources in line with the Scottish Index of Multiple Deprivation (2006) figures, working with the most disadvantaged groups. Parents and carers have engaged with the Community Learning and Development Team in pre-parenting activities including and report on the positive impact on them as parents and carers –

- Loose Ends Project aimed at supporting attendees to identify and prioritise their learning needs as well as developing the knowledge, skills and confidence to address their needs
- First Aid for Parents with Pre-School Children
- Involvement in the John Muir Awards leading to improved communication and levels of understanding between themselves and their family members
- Speyside Try It Now promoting lifelong learning and building confidence
- Pilmuir Project that included Craft for Parents and Pre-5's Sports
- Reading Together Project impacting on children's development by promoting reading to and with children
- Confidence to Cook raising awareness of healthy eating and preparing nutritious meals for children

Summary and emerging trends

- Moray is below the national average in relation to child poverty
- 6.96% of all births in Grampian were of a low birth weight, below the Scottish average. Results have remained relatively unchanged over the past decade
- In Grampian, smoking during pregnancy is measured at a woman's first antenatal booking appointment. 20.3% stated that they currently smoked, below the national average of 20.9%

- 52.3% of children in Moray were registered with a dentist, below the national average of 69.9%
- Life expectancy at birth in Moray, at 78 years is above the national average of 77.4 years
- According to 2008 school meals census results, 84.7% of primary school pupils in Moray registered for free school meals, took one, remaining above comparator and national averages
- The percentage of primary school children taking free or purchased school meals at 40.7% remains below comparator authorities' and national averages

4) We have improved the life chances for children, young people and families at risk

Child Protection

The Scottish Children's Reporter Administration in their Annual Report for 2006/07 [13] reported that there were a total of 682 children referred, 4.3% of the population aged under 16 years, below the national average of 6.1%. 430 children, 2.7% of the under 16-age population were referred on non-offence grounds, again below the national average of 4.8%. 304 children, 3.4% of the under 16-age population were referred on offence grounds, equalling that of the national average.

In Moray, for the period ended 31st March 2007, 43 children were identified as persistent young offenders and 44% of offence referrals were attributed to persistent young offenders, above the national average of 32.5%.

The number of Children's Hearings held has reduced by 3% to 453 during 2006/07. Time Interval Standards for the Children's Hearings System were published in 2001 and Moray's performance was above national levels in four of six categories.

National Time Interval Standard targets

Standard TI3	All reports* will be submitted within 20 working days of the date of the request from the Reporter
Standard TI4	The Reporter will make a decision about a referral within 50 working days of receipt
Standard TI5	The Reporter will inform the child and family of the outcome of a referral within 5 working days of making a decision
Standard TI6	Hearings will be scheduled to take place within a maximum of 20 working days of the Reporter's decision
Standard TI8	All relevant people, information and resources will be available to Hearings to ensure that continuations are kept to a minimum
Standard TI14	The child and family will be sent written notification of the outcome of a Hearing within 5 working days of the Hearing

*Refers to Social Work reports on children referred – Initial Assessment Reports and Social Background Reports.

Performance against Time Interval Standard Targets in 2006/07

	TI3	TI4	TI5	TI6	TI8	TI14
Moray	57%	69%	64%	45%	82%	100%
Scotland	34%	65%	61%	66%	73%	88%

The Scottish Government published 2007/08 figures [12] on the number of child protection referrals, number of child protection referrals that resulted in a case conference, number of registrations, number of de-registrations and the number of children on child protection registers.

Numbers of child protection referrals, subject to a case conference, registrations, de-registrations and on child protection registers –

	Year Ended 31 March 2008				As at 31 March 2008
	Number of Referrals	Number Subject to a Case Conference	Number of Registrations	Number of De-registrations	Number on Register
Moray	230	39	32	72	89
National	12,382	4,298	2,814	3,197	2,437

As at 31st March 2008, in Moray, there were 89 children on the Child Protection Register, a rate of 5.6 per 1,000 population aged between 0 and 15 years, above the national average of 2.7.

Pupil Exclusions

There were 44,794 exclusions from local authority schools in Scotland [23], an increase of 4% from 2005/06 and a continual increase from 2002/03. About 22,800 different pupils (3% of pupils) were excluded during the year. In Moray, there was a slight increase in the total number of exclusions from 491 in 2005/06 to 496 in 2006/07, mirroring increasing national and comparator authority trends. 294 different pupils in Moray schools (2% of pupils) were excluded during the year.

According to published results, Moray is the 9th lowest excluding authority in Scotland in terms of exclusions per 1,000 pupils.

Over 99% of all exclusions both nationally and in Moray were temporary. In Moray, there were 2 removals from the register and in both cases alternative educational arrangements were made.

Nationally, overall, male pupils accounted for 78% of temporary exclusions, the same as 2005/06. In Moray, male pupils accounted for 83% of temporary exclusions, a slight increase from 81% in 2005/06.

Nationally, 13% of the total exclusions were from local authority primary schools, equivalent to 16 exclusions per 1,000 pupils. In Moray, 17% of the total exclusions were from primary schools, an equivalent of 12 exclusions per 1,000 pupils, a 2% decrease from exclusions in 2005/06. 48% of all temporary exclusions occurred in P7.

Nationally, 84% of the total exclusions were from local authority secondary schools, equivalent to 120 exclusions per 1,000 pupils. Exclusion rates peaked during S3, with 204 exclusions per 1,000 pupils, a 4% increase from exclusions on 2005/06. In Moray, 83% of the total exclusions were from secondary schools, an equivalent to 69 exclusions per 1,000 pupils, a 2% increase from exclusions in 2005/06. Temporary exclusions percentage rates peaked with 32% of all temporary exclusions occurring in S3 and 27% in S2.

Exclusions per 1,000 pupils

Primary Education	2003/04	2004/05	2005/06	2006/07
Moray	12	15	12	12
Comparator Average	8	9	11	12
National Average	11	13	15	16

Secondary Education	2003/04	2004/05	2005/06	2006/07
Moray	59	75	67	69
Comparator Average	68	79	65	78
National Average	105	112	115	120

Looked After Children

In Moray, there were 193 children looked after as at March 2007 [11], 1% of the 0-18 age group population, below the national average of 1.3%. 87% of children were looked after in a community setting and 13% in residential care, in line with national averages of 88% and 12%. For those children looked after away from home, 67% had been in placement for over one year, below the national average of 72%. 33% of Moray's children looked after away from home had been with 3 or more placements, above the national average of 29%.

Audit Scotland statutory performance indicators [16] report that in 2006/07, in Moray, there were sixteen 16 or 17 year olds ceasing to be looked after. In 2007/08 there were fourteen.

Looked after Children – Academic Attainment

	2006/07		2007/08
	Moray	Scotland	Moray
Percentage of 16 or 17 year old ceasing to be looked after:			
At home	50%	55%	71%
Away from home	50%	45%	29%
Percentage attaining at least one SCQF level 3 (any subject):			
At home	62.5%	46.9%	70.0%
Away from home	100.0%	62.8%	75.0%
Total	81.3%	54.0%	71.4%
Percentage attaining at least SCQF level 3 in English and Maths:			
At home	50.0%	26.8%	30.0%
Away from home	62.5%	48.0%	50.0%
Total	56.3%	36.3%	35.7%

In 2006/07, results for those in Moray attaining at least one SCQF level 3 significantly improved from 2005/06 result of 57.1% whereas performance nationally decreased from 59.3%.

Of the care leavers in Moray in 2006/07, 53% had a pathway plan and 59% had a pathway co-ordinator. This compared with 50% and 55% nationally. 93% of Moray's care leavers were still in contact with social services, compared to 88% nationally. In addition, 40% of care leavers in Moray known to be economically active were in employment, education or training compared to 38% nationally.

Additional Support Needs

There were 346 Primary pupils, 4.9% of all pupils, with a Record of Needs, Co-ordinated Support Plan and / or Individualised Education Programme in Moray [21]. This compares to the comparator authorities' average of 5.2% and national average of 4.8% of all pupils. There were 287 Secondary pupils, 4.8% of all pupils, with a Record of Needs, Co-ordinated Support Plan and / or Individualised Education Programme in Moray. This compares to the comparator authorities' average of 4.8% and national average of 4.3% of all pupils.

The main reasons for support for Primary pupils with Additional Support Needs include; autistic spectrum disorder (19%); social, emotional and behavioural difficulty (18%); language or speech disorder (15%); other moderate learning difficulty (15%) and learning disability (15%). The majority of needs are addressed by providing additional specialist teaching or non-teaching support. Nationally, the principle reasons and the nature of support provided are similar.

The main reasons for support for Secondary pupils with Additional Support Needs include; learning disability (45%); dyslexia (23%) and social, emotional and behavioural difficulty (21%). The majority of needs are addressed by providing additional specialist teaching or non-teaching support. Nationally, the principle reasons and the nature of support provided are similar.

Community Learning and Development

Community Learning and Development target their resources in line with the Scottish Index of Multiple Deprivation (SIMD) (2006) figures, working with families from the lowest 50% of SIMD group who say that their engagement with community based adult learning has had a positive impact on themselves and their family. Learners range from 18 to 60 years, many have dependant children, and the majority have health related problems, poor literacy and no qualifications. All experience social isolation and lack basic life skills and all engaging with the service are provided with the necessary level of support to engage, sustain their involvement to achieve some form of success.

Summary and emerging trends

- In Moray, as at 31st March 2008, the rate of 0 to 15 year olds on the Child Protection Register, at 5.6 per 1,000 population was significantly above the national average of 2.7

- Referrals to the Children's Reporter attributed to persistent young offenders in Moray in 2006/07, at 44%, was above the national average
- 57% of reports were submitted to the Children's Reporter within the required period compared to 34% nationally
- In 2006/07, Moray was the 9th lowest excluding authority in Scotland
- The percentage of all pupils with a Record of Needs, Co-ordinated Support Plan and / or Individualised Education Programme in Moray is more or less in line with comparator authorities and national averages
- As at March 2007, 87% of Moray's looked after children were being cared for in a community setting, and 13% in a residential setting, against national and comparator authorities averages of 88% and 12%
- In 2006/07, 81.3% of Moray's care leavers had at least one qualification at SCQF level 3 or above, significantly exceeding national and comparator authorities' averages of 54% and 58% respectively. The 2007/08 result was 71.4%
- In 2006/07, 56.3% of Moray's care leavers had qualifications in Mathematics and English at SCQF level 3 or above, exceeding national and comparator authorities' averages of 36.3% and 38% respectively. The 2007/08 result was 35.7%
- 4.9% of all Moray primary school and 4.8% of Moray secondary school pupils in 2007 were identified as having Additional Support Needs. National levels for primary and secondary were 4.8% and 4.3% respectively

References

- 1) General Register Office for Scotland: Mid-2006 Population Estimates Scotland.
- 2) www.elginscotland.org/elgin-moray-scotland/about-elgin
- 3) General Register Office for Scotland: Mid-2004 Population Estimates for Settlements in Scotland.
- 4) General Register Office for Scotland: Scottish Settlements Urban and Rural Areas in Scotland.
- 5) Scottish Index of Multiple Deprivation 2006: General Report
- 6) NOMIS Labour Market Profile, Moray. www.nomisweb.co.uk/reports
- 7) Census 2001 at www.scrol.gov.uk/scrol/browser
- 8) General Register Office for Scotland: Vital Events Reference Tables, 2006
www.gro-scotland.gov.uk/statistics/index.html
- 9) General Register Office for Scotland: 2006-based Population Projections for Scottish Areas
www.gro-scotland.gov.uk/statistics/index.html
- 10) Scottish Neighbourhood Statistics. www.sns.gov.uk
- 11) Scottish Government Statistics Publication Notice: Children Looked After 2006/07
www.scotland.gov.uk/Resource/Doc/204913/0054519.pdf
- 12) Scottish Government Statistics Publication Notice: Child Protection Statistics 2006/07
www.scotland.gov.uk/Resource/Doc/198434/0053038.pdf
- 13) Scottish Children's Reporter Administration – Annual Report for 2006/07
www.scra.gov.uk/cms_resources/Annual%20Report%202006-2007%20291107.pdf
- 14) Scottish Government Recorded Crime Statistics.
www.scotland.gov.uk/Topics/Statistics/Browse/Crime-justice/PubRecordedCrime
- 15) Adult Literacy & Numeracy End of Year Report 2006-07
- 16) Audit Scotland Statutory Performance Indicators 2006/07.
www.audit-scotland.gov.uk/performance/

- 17) Scottish Government Statistics Publication Notice: Destination of School Leavers in Scotland 2006/07
www.scotland.gov.uk/Resource/Doc/206183/0054792.pdf
- 18) HIE Moray, Business Research Report, July 2007.
www.hie.co.uk/moray/current-issues
- 19) Scottish Government Statistics Publication Notice: Attendance and Absence in Scottish Schools 2006/07
www.scotland.gov.uk/Resource/Doc/206645/0054901.pdf
- 20) Scottish Government Standard Tables and Charts (STACS) – attainment data
- 21) Scottish Government Statistics Publication Notice: Pupils in Scotland 2007
www.openscotland.gov.uk/Resource/Doc/233368/0063951.pdf
- 22) Scottish Government Statistics Publication Notice: School Meals in Scotland 2008
www.scotland.gov.uk/Resource/Doc/229197/0062036.pdf
- 23) Scottish Government Statistics Publication Notice: Exclusions from Schools in Scotland 2006/07
www.scotland.gov.uk/Resource/Doc/210491/0055658.pdf
- 24) www.endchildpoverty.org.uk/why-end-child-poverty/poverty-in-your-area
- 25) <http://www.poverty.org.uk/S11/index.shtml>
- 26) <http://www.isdscotland.org/isd/1461.html>
- 27) Scottish Government Statistics Publication Notice: Pre-School and Childcare Statistics 2008
www.scotland.gov.uk/Resource/Doc/238307/0065417.pdf